



***Plastic Hardware Specialists***  
*Cabinet Master*<sup>®</sup> Plastic Hardware

# Bainbridge Manufacturing, Inc.

*Since 1960*

**2024**

**[www.bainbridgemfg.com](http://www.bainbridgemfg.com)**

237 W. 3rd Street • PO Box 487 • Waterville, WA 98858  
(509) 745-9555 • 1-800-255-4702 • Fax (509) 745-9666



1. Table of Contents
2. Terms and Conditions
3. BHMA/ANSI items list
4. **New Products**
5. False Front Clips
6. Counter, Desk, Finishing Grommets
7. Corner Braces and Brackets
8. Drawer Slide Spacers
9. Shelf Supports
10. Drawer Bumpers
11. Ventilation Grills
12. Drawer Slide Sockets
13. Shelf Hold Down Clips
14. Hinge, Catch and Lock Spacers
15. Glass and Door Panel Clips
16. Mirror and Screen Clips
17. Door Clips
18. Drawer Stops and Latches
19. Corner Protectors
20. Slide Glides
21. Caps and Covers
22. Finishing Plugs
23. Closet Rod Pole Sockets
24. Vertical Divider Clips
25. Backplates & Glides
26. Drawer Pulls
27. Miscellaneous items



**Bainbridge Manufacturing, Inc.**

Plastic Hardware Specialists | *Cabinet Master® Plastic Hardware*

PO Box 487, 237 W. 3rd Street Waterville, WA 98858

1-509-745-9555 | info@bainbridgemfg.com

www.bainbridgemfg.com

# Terms & Conditions

## Terms of Payment

Hardware Products -1% -10 days from date of invoice/Net 30 days, unless otherwise negotiated with our US office.

Rush Orders-shipped same day order is received. There is a \$25.00 surcharge for this service.

Finance Charge - 1.5%/month on delinquent charges.

International Shipments - must be prepaid unless otherwise approved by Bainbridge Manufacturing, Inc. (BMI)'s U.S. Office.

## Credit

Credit approval by our credit department is required for open account terms. Allow 10 to 15 days. Pending approval, domestic orders can be shipped by C.O.D. or can be prepaid by credit card. We accept Master Card, Visa, Discover, and American Express.

## C.O.D. Shipments

COD shipments are available through UPS only. COD charges are billed collect. Orders shipped to customers who are not on an open account basis can be C.O.D. or prepayment can be made by credit card. We accept Master Card, Visa, Discover, and American Express.

## Set-Up Charges and Color Charges

Standard mold set-up cost for custom molding in \$200.00 per run. BMI color change charge: \$250.00

## Customs, Duties and Import/Export Documentation

Unless otherwise agreed to by BMI's U.S. Office, the buyer shall bear all risk and expense of obtaining any documents by the country of delivery and/or origin for the purpose of exportation and/or importation (and where necessary for passage in transit through another country) including the cost of certificates of origin, export license and consular fees. The buyer shall also bear all costs and expense of any custom duties and taxes that may be levied by reason of export or import or in transit.

## Insurance

Unless otherwise agreed to by BMI's U.S. Office, the buyer shall be responsible for procuring, at its own cost, insurance coverage against the risk of carriage of the goods and for coverage of any special risks against which the buyer requires coverage.



**Bainbridge Manufacturing, Inc.**

Plastic Hardware Specialists | *Cabinet Master® Plastic Hardware*

PO Box 487, 237 W. 3rd Street Waterville, WA 98858

1-509-745-9555 | info@bainbridgemfg.com

www.bainbridgemfg.com

# Terms & Conditions

## Return Merchandise

No merchandise may be returned without prior authorization. Return goods are subject to restocking charges. Special order (non-catalog) items are non-returnable under any circumstances. We do not accept returns of merchandise purchased prior to one(1) year from date of shipment. Please call 509-745-9555 for returns and RGA information.

## Delivery Shortages

All claims for shortage must be filed within 30 days after invoice date for the merchandise.

## Prices

Prices are subject to change without prior notice. All special quotation prices are good for 30 days unless otherwise noted. All invoicing and quotations for costs, pricing and shipping charges relating to Bainbridge Manufacturing, Inc. are always U.S. currency.

## Office Hours

7:00 a.m. to 4:00 p.m. PST Monday - Friday

CLOSED SATURDAYS AND SUNDAYS

## Exceptions

Exceptions to the General Policies outlines above may be negotiated on a case-by-case basis.

## LIMITED PRODUCT WARRANTY

All parts sold by BMI are warranted to be free of defects in material or workmanship under normal use and service for a period of (1) year from date of shipment. If the product should fail under normal use and service because of such defect, we will replace it with a new one at no charge, provided the original is returned to our factory for inspection, transportation prepaid within (30) days after the defect is discovered. Our liability under this warranty is expressly limited to replacement of the product without charge, and in no event shall we be liable in any way for consequential, special or incidental damages.

**WE MAKE NO OTHER WARRANTIES, EXPRESSED  
OR IMPLIED, INCLUDING IMPLIED WARRANTIES OR  
MERCHANT-ABILITY AND FITNESS FOR A  
PARTICULAR PURPOSE.**



The following items have had the listed tests performed and have passed. The actual data is available by request from Bainbridge Mfg., Inc. 509-745-9555

### Shelf Rests (Shelf Supports)

ANSI/BHMA A156 Section 4.8.2, Test 7, Grade 1

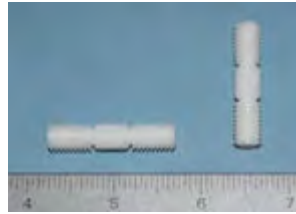
- #32201— two 5mm pins , 3/4” and 1” shelf
- #3206 — two 5mm pins , 3/4” and 1” shelf with screw hole
- #3227 —two 5mm pins for 3/4” shelf
- #3228 —two 5mm pins for 1” shelf
- #3267—two 5mm pegs for 3/4” shelf
- #3250 — 5mm peg X 1/2 shelf
- #3248 — 5mm peg X 1/2 shelf
- #3233 —5mm peg X 5/8 shelf
- #3200 —5mm peg X 3/4 shelf
- #3253 —5mm peg X 3/4 shelf
- #3226 —5mm peg X 3/4 shelf
- #3232 —1/4 peg X 1/2 shelf
- #3249 —1/4 peg X 1/2 shelf
- #3202 —1/4 peg X 1/2 shelf
- #3246 —1/4 peg X 5/8 shelf
- #3201 —1/4 peg X 3/4 shelf
- #3244 —1/4 peg X 3/4 shelf

BHMA CERTIFIED

- #32201—32201— two 5mm pins , 3/4” and 1” shelf



**#1996 Dowel Pin**  
SUPER GRIP  
8mm diameter  
Nylon 1-1/2" long



**#32691 Vanity**  
5mm peg .300 long  
5/8" Shelf  
Multiple colors



**#6018 Rear Socket**  
Adjustable Under  
Mount (8mm pegs)



**#1623 Corner Brace**  
Reversible for easy  
install—labor saving  
2-1/2" x 2-1/2" x 3/4"



**#6019 Rear Socket**  
Adjustable Under  
Mount (8mm pegs)



**#1718 Triceratops**  
HUGE 7" Long Rubber  
Drawer Pull  
Pegs 3" apart  
Multiple colors



**#4321 False Front  
Clip**  
4" Opening  
7/8" Face Frame  
Screw in place



**#1719 Long Neck**  
HUGE 11" Long  
Rubber Drawer Pull  
Pegs 3" apart  
Multiple colors



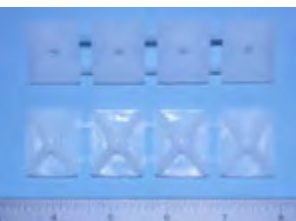
**#4505 Vent Grill**  
2-5/8" X 8-21/32"  
1/4 deep walls  
Added MAPLE



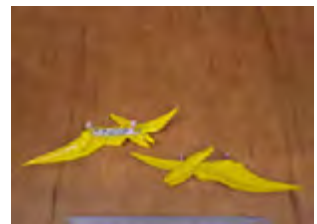
**#1723 Tyrannosaurus**  
HUGE 7-1/2" Long  
Rubber Drawer Pull  
Pegs 3" apart  
Multiple colors



**#5407 Slide Glide**  
1" X 1-1/8"  
Strip of 4—break off  
after stapling in place



**#1726 Pterodactyl**  
HUGE 11-1/2" Long  
Rubber Drawer Pull  
Pegs 3" apart  
Multiple colors

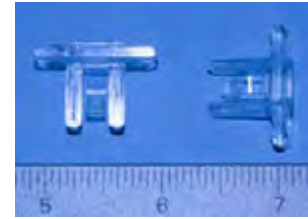




**#1724 Velociraptor**  
HUGE 8" Long Rubber  
Drawer Pull  
Peg 3" apart  
Multiple colors



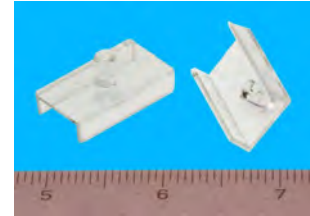
**#4214 Divider Clip**  
7mm panel 3/4" long  
(1/8" saw slot tab)  
multiple colors



**#1725 Stegosaurus**  
HUGE 11-1/2" Long  
Rubber Drawer Pull  
Pegs 3" apart  
Multiple colors



**#4215 Divider Clip**  
1/4" diam .295 long peg  
Holds 1/2" thick board  
Multiple colors



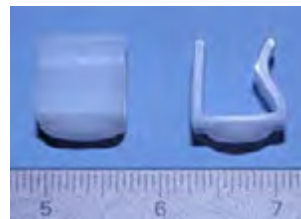
**#3521 Lock Spacer**  
1-11/16 X 1-11/16  
3/8" thick  
3/4 X 7/8 oblong hole  
White



**#3018 End Cap**  
1-1/4" X 3/4"  
Multiple colors



**#54021 Slide Glide**  
snap on to a 12mm  
cabinet sidewall to slide  
cabinet in shop



**#18152 Vanity Shelf  
Support**  
5mm peg  
300 long peg  
Multiple colors



**#1727 Pleisosaur**  
HUGE 11" Long Rub-  
ber Drawer Pull  
Pegs 3" apart  
Multiple colors



**#3303 Door Clip**  
3/4 X 21/32 X 21/32



**#4213 Divider Clip**  
7mm panel 2-3/8" long  
(1/8" saw slot tab)  
multiple colors



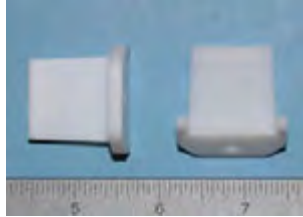
**#3302 Door Clip**  
3/4 X 3/4 X 1-23/64





# False Front Attachments

**#4312 False Front Clip**  
Fits 3/4" face frame  
Install with screws



**#4302 False Front Block**  
3/4" thick  
4" high opening



**#4308 False Front Clip**  
Fits 3/4" face frame  
Install with screws



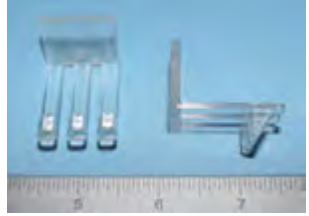
**#4303/#4304 False Front Clip**  
2 piece  
Screw into place



**#4306 False Front Block**  
1/2" thick face frame  
4-1/2" high opening



**#4311 False Front Clip**  
Attach with staples  
3/4" face frame with rubber bumpers.



**#4300 False Front Block**  
3/4" thick  
4-1/2" high opening



**#4301 False Front Block**  
13/16" thick  
4-1/2" high opening



**#4307 False Front Block**  
5/8" thick  
5" high opening



**#4313 False Front Block**  
3/4" Thick  
4-1/2" high opening



**#4305 False Front Clip**  
Attach with staples  
3/4" face frame.



**#4319 False Front Clip**  
5-1/4" opening  
2.5mm bumper  
3/4 Face Frame  
Screw in place







# False Front Attachments

**#4316**  
**False Front Clip**  
4-1/2" opening  
3/4" face frame 3mm bumper



**#4314**  
**False Front Clip**  
4-1/2" opening  
3/4" face frame  
no bumper



**#4315**  
**False Front Clip**  
5" opening  
3/4" face frame  
no bumper



**#4320 False Front Clip**  
5" opening  
2mm bumper  
3/4 Face Frame  
Screw in place



**#4317 False Front Clip**  
5" opening  
1/8" bumper  
3/4 Face Frame  
Screw in place



**#4321 False Front Clip**  
4" Opening  
1/4" Face Frame  
Screw in place





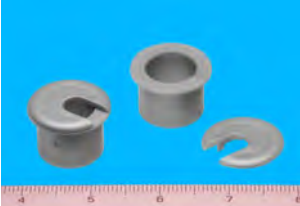
**#1040 Grommet**  
Fits 4" drilled hole  
Removable lid  
Multiple colors



**#1031**  
Cord Grommet  
2-1/2" hole 5/8" deep  
Multiple colors



**#1041**  
Cord Grommet  
1" hole 5/8" deep  
Multiple colors



**#1038**  
Cord Grommet  
2-3/8" hole  
Multiple colors



**#1043**  
Cord Grommet  
3" hole  
Multiple colors



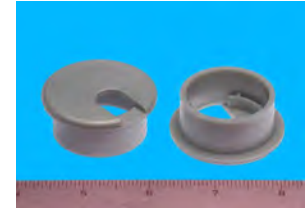
**#1035**  
Cord Grommet  
2" hole  
Multiple colors



**#1039**  
Cord Grommet  
1-3/4" hole  
Multiple colors



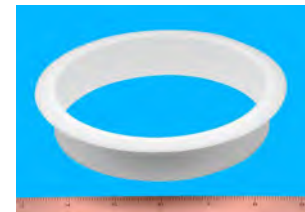
**#1037**  
Cord Grommet  
1-1/2" hole  
Multiple colors



**#1108**  
Finishing Grommet  
3/4" hole  
Multiple colors



**#1047**  
Trash Ring  
5" hole 1" deep  
Multiple colors



**#1044**  
Trash Ring  
6" hole 1" deep  
Multiple colors

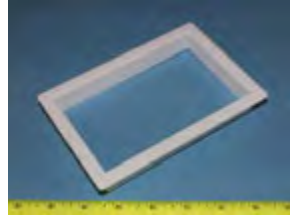


**#1104**  
Finishing Grommet  
10-3/8" X 1-1/4"  
3/4" deep  
Multiple colors





**#1110** Single Outlet  
Access Grommet  
5-13/16 X 3-13/16  
Multiple colors



**#1109**  
Finishing Grommet  
5" X 12"  
1" deep  
Multiple colors



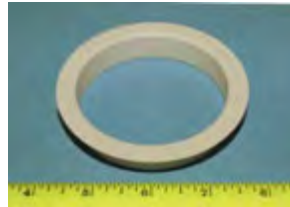
**#1034** Double Outlet  
Access Grommet  
5-1/2" X 5-13/16"  
Multiple colors



**#1103**  
Finishing Grommet  
4-11/16" X 8-1/8"  
Multiple colors



**#1107**  
Finishing Grommet  
3" hole  
Multiple colors



**#1106**  
Finishing Grommet  
6-1/4" X 2-3/16"  
3/4" deep  
Multiple colors



**#1050**  
Finishing Grommet  
1-3/4 hole  
Multiple colors



**#1101**  
Finishing Grommet  
5-1/2" X 5-1/2"  
Multiple colors



**#1100**  
Finishing Grommet  
4" X 1-1/4"  
Multiple colors



**#1102**  
Finishing Grommet  
2-5/16 X 3-1/2"  
1-1/6" deep

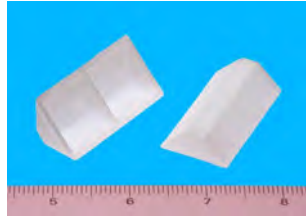


**#1105**  
Finishing Grommet  
6-1/4" X 2-3/16"  
Multiple colors





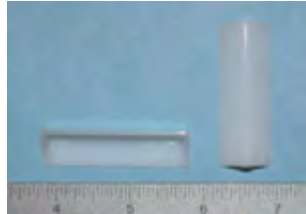
**#1602**  
Center rib for strength  
3/4" X 3/4" X 2"  
Staple in place



**#1616**  
Adjustable with slots  
Screw in place  
1-1/4" X 1-1/4"  
1/8" thick  
Multiple colors



**#1615**  
For tight applications  
1/2" X 1/2" X 2"  
Staple in place



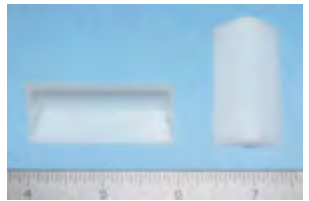
**#1619**  
Corner Brace  
4" X 1" X 1"  
Natural Color  
Staple in place



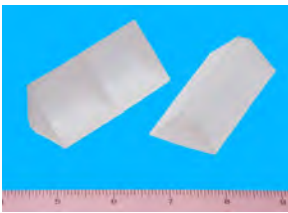
**1623 Corner Brace**  
Reversible for easy  
install—labor saving  
2-1/2" x 2-1/2" x 3/4"



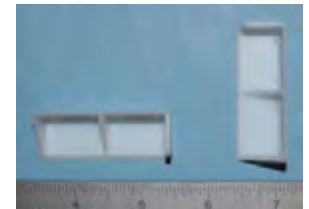
**#1609**  
3/4 X 3/4 X 2  
East staple gun access  
no center rib  
Staple in place



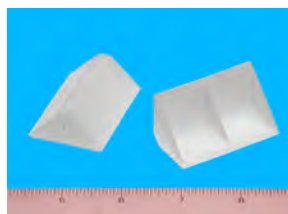
**#1603**  
1" X 1" X 3"  
Staple in place



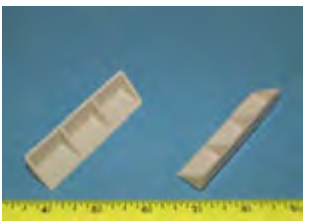
**#1614**  
2" X 3/4" X 3/4" with  
added tab for additional  
stapling on one end  
Staple in place



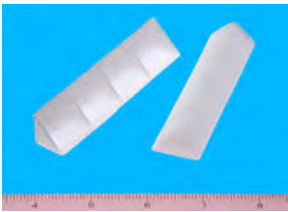
**#1657**  
1" X 1" X 2"  
Staple in place



**#1604**  
9/16 X 9/16 X 3  
Multiple colors  
Staple in place



**#1605**  
5/8" X 5/8" X 4"  
Staple in place

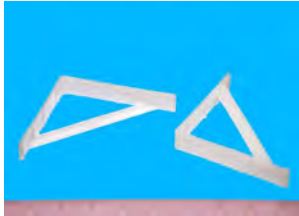


**#1699**  
3/4" X 3/4" X 3-1/2"  
Multiple colors  
Screw in place





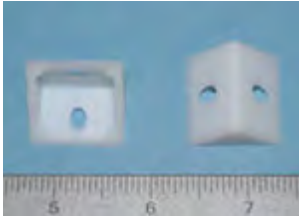
**#1667**  
4" X 4" X 5/8"  
Kick Panel



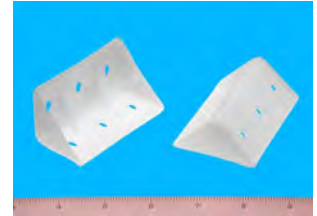
**#1618**  
Flat Full Overlay Brace  
1-7/8" X 1-1/2"  
Multiple colors



**#1682**  
3/4" X 3/4" X 1"  
Screw in place



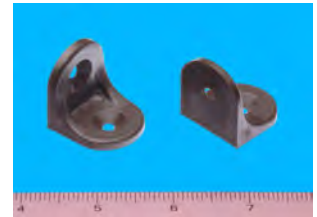
**#1683**  
1-1/2" X 1-1/2" X 3"  
Screw in place



**#1684**  
3/4" X 3/4" X 2-3/4"  
Multiple colors  
Staple in place



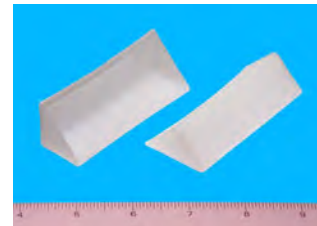
**#1685**  
1-1/8" X 1-1/8"  
Multiple colors  
Screw in place



**#1689**  
5/8" X 5/8" X 1-7/8"  
Multiple colors  
Staple in place



**#1692**  
1" X 1" 3-1/4"  
Staple in place



**#1610**  
2-1/2 X 2-1/2 X 3/4  
Staple in place



**#1698**  
3/4" X 3/4" X 2"  
Multiple colors  
Screw in place



**#1652**  
3/4" X 3/4" X 6"  
Multiple colors  
Screw in place



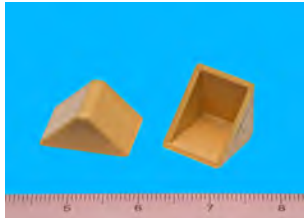
**#1659**  
3" X 3" X 7/8"  
Staple in place  
Multiple colors





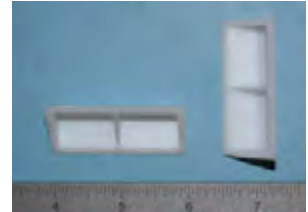
**#1664 Brace**

1" X 1" X 1"  
Multiple colors



**#1613 Brace**

Heavy Duty  
3/4" X 3/4" X 2"



**#1608 Brace**

2-1/2 X 2-1/2 X 3/4  
NO alignment tabs



**#1665 Heavy Duty Brace**

3" X 3" X 7/8"  
Install using screw holes



**#1612 Brace**

Small Corner Brace  
3/4 X 3/4  
Multiple colors



**#1655 Brace**

1-3/4" X 1-3/4"  
Folding lid  
Multiple colors



**#1621 Corner Brace**

2-1/2" X 2-1/2" X 3/4"



**#1622 Corner Brace**

Alignment tab  
2-1/2 X 2-1/2 X 3/4



**#1654 Brace**

3/4" X 3/4" X 9-1/2"  
Multiple colors



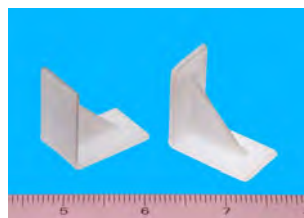
**#1611**

Small Corner Brace  
3/4 X 3/4 X 3/8  
Lead in for drawers  
Screw in place



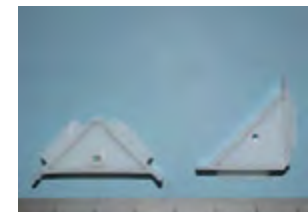
**#1680 Staple Brace**

1-1/4" X 1-1/4" X 3/4"  
Staple in place  
Multiple colors



**#1620 Corner Brace**

Alignment tab  
2-1/4 X 2-1/4 X 3/4





## Bainbridge Manufacturing, Inc.

Plastic Hardware Specialists | Cabinet Master® Plastic Hardware

PO Box 487, 237 W. 3rd Street Waterville, WA 98858

1-509-745-9555 | info@bainbridgemfg.com

www.bainbridgemfg.com

# Braces

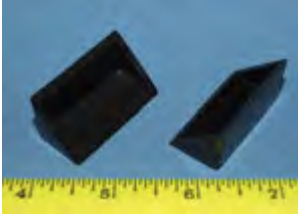
### #1607 Corner Brace

45 degree  
Multiple Colors



### #1606 Corner Brace

3/4" X 3/4" X 1-3/4"  
Staple in place  
BK





# Drawer Slide Spacers

**#3616 Slide Spacer**  
1" thick  
holes 64mm apart  
5mm peg  
Multiple colors



**#3691 Spacer**  
Grass Soft close  
1/4" thick  
5mm peg  
Multiple colors



**#3684 Slide Spacer**  
3/8" offset  
5mm peg  
Multiple colors



**#3603 Slide Spacer**  
1-7/16" offset  
5mm peg  
Multiple colors



**#3683 Slide Spacer**  
5/8" offset  
5mm peg & .200" holes  
Multiple colors



**#3693 Spacer**  
Full extension  
1" offset, 5mm peg,  
64mm hole to hole



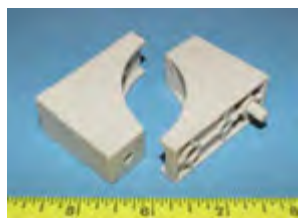
**#36021 Slide Spacer**  
1" thick  
5mm peg  
Multiple colors



**#3694 Spacer**  
Full extension  
1.25" offset, 5mm peg,  
64mm hole to hole



**#36441 Slide Spacer**  
1-1/2" thick  
5mm peg  
Multiple colors



**#3613 Slide Spacer**  
2-3/16" thick  
5mm peg  
Multiple colors



**#3686 Slide Spacer**  
1-1/2" offset  
5mm peg & .200" holes  
Multiple colors



**#3689 Spacer**  
3/4" offset  
single small hole .110"  
Multiple colors

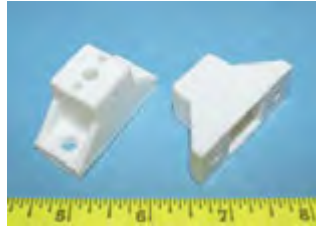






# Drawer Slide Spacers

**#3602 Slide Spacer**  
1" Thick,  
.190" Holes 32mm apart  
Multiple colors



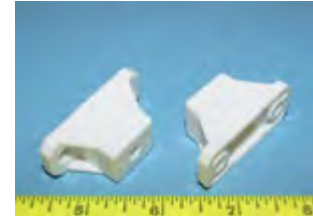
**#3682 Slide Spacer**  
3/4" Thick,  
1/4" Holes 32mm apart  
Multiple colors



**#36261 Slide Spacer**  
5/8" Thick  
5mm peg  
Multiple colors



**#36071 Slide Spacer**  
7/8 thick  
.205" holes 32mm  
apart  
Multiple colors



**#36011 Slide Spacer**  
3/4" Thick  
5mm peg  
Multiple colors



**#3627 Slide Spacer**  
1" thick  
5mm peg  
Multiple colors



**#3636 Slide Spacer**  
2" thick  
5mm peg  
One attachment hole  
Multiple colors



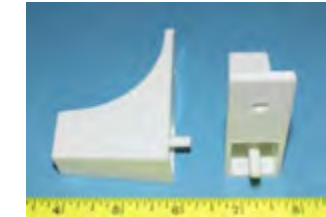
**#3673 Slide Spacer**  
3/4 Thick  
5mm peg  
Multiple colors



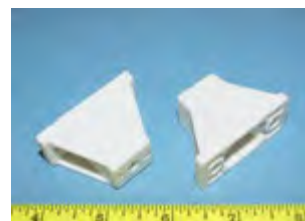
**#3622 Slide Spacer**  
1-1/8" thick  
5mm peg  
Multiple colors



**#3620 Slide Spacer**  
2" thick  
5mm peg  
Multiple colors



**#3604 Slide Spacer**  
1-1/4" Thick  
1/4" holes 32mm apart  
Multiple colors



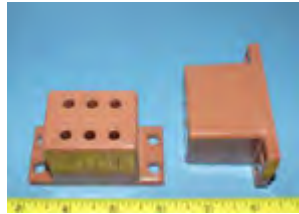
**#3623 Slide Spacer**  
2" thick  
5mm peg  
Two attachment holes  
Multiple colors





# Drawer Slide Spacers

**#3639 Slide Spacer**  
1-3/4" Thick  
Multiple colors



**#3652 Slide Spacer**  
5/8" Thick  
Multiple colors



**#3695 Slide Spacer**  
1" Thick  
Multiple colors



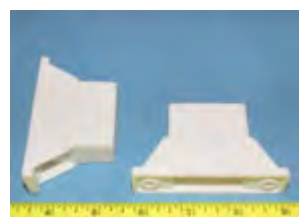
**#3692 Slide Spacer**  
1-1/4" Thick  
Multiple colors



**#3643 Slide Spacer**  
1-1/2" Thick  
Multiple colors



**#3630 Slide Spacer**  
1-7/8" thick  
Holes 64mm apart  
no peg  
Multiple colors



**#3669 Slide Spacer**  
1-1/4" thick  
holes 64mm apart  
5mm peg  
Multiple colors



**#36161 Slide Spacer**  
1" thick ,  
holes 64mm apart  
no peg  
Multiple colors



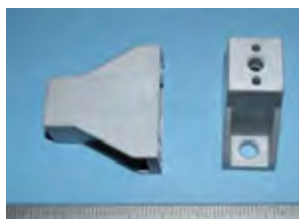
**#3615 Slide Spacer**  
42mm thick ,  
holes 64mm apart  
5mm peg  
Multiple colors



**#36241 Slide Spacer**  
1/4" holes 32mm apart  
35 mm Thick attach  
slide with euro screw  
Multiple colors



**#3631 Slide Spacer**  
1-3/4" Thick,  
7mm Holes 32mm apart  
Multiple colors



**#3651 Slide Spacer**  
15mm thick  
holes 32mm ctr. to ctr.  
no peg Multiple colors





# Drawer Slide Spacers

**#3658 Slide Spacer**  
1/8" Thick,  
1/4" Holes 32mm apart  
Multiple colors



**#36061 Slide Spacer**  
1/4" Thick  
205" holes 32mm apart  
Multiple colors



**#3606 Slide Spacer**  
1/4" Thick,  
1/4" Holes 32mm apart  
Multiple colors



**#3605 Slide Spacer**  
3/8" Thick,  
1/4" Holes 32mm apart  
Multiple colors



**#3649 Slide Spacer**  
7/16" Thick,  
1/4" Holes 32mm apart  
Multiple colors



**#3607 Slide Spacer**  
7/8"  
.242" Holes 32mm  
apart  
Multiple colors



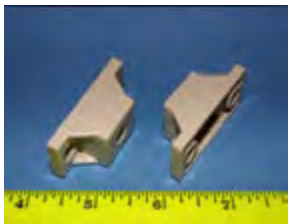
**#3600 Slide Spacer**  
1/2" Thick,  
1/4" Holes 32mm apart  
Multiple colors



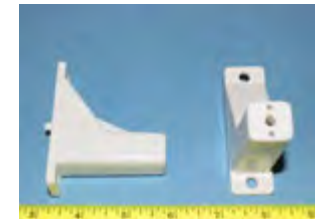
**#3626 Slide Spacer**  
5/8" Thick,  
1/4" Holes 32mm apart  
Multiple colors



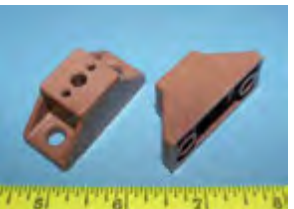
**#3674 Spacer**  
11/16 Thick  
1/4" Holes 32mm apart  
Multiple colors



**#3656 Slide Spacer**  
2-1/2" thick  
5mm peg  
Multiple colors



**#3628 Slide Spacer**  
13/16" Thick,  
1/4" Holes 32mm apart  
Multiple colors



**#3609 Slide Spacer**  
1-1/4" thick  
5mm peg  
Multiple colors



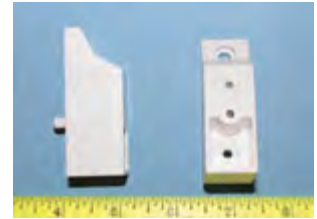


# Drawer Slide Spacers

**#3690 Slide Spacer**  
1-1/2" thick  
5mm peg  
lead in for easy screw start  
Multiple colors



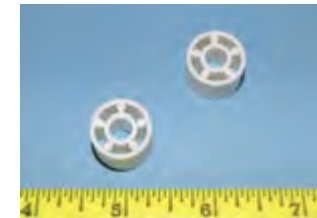
**#3657 Slide Spacer**  
1" thick  
screw hole at top  
5mm peg  
Multiple colors



**#3624 Slide Spacer**  
1/4" holes 32mm apart  
35 mm thick attach  
slide with wood screw  
Multiple colors



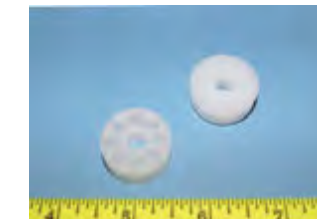
**#3617 Round Spacer**  
1/2" thick  
5/8" OD  
1/4" ID  
Multiple colors



**#3675 Slide Spacer**  
1-1/2" Thick  
1/4" Holes 32mm apart  
Multiple colors



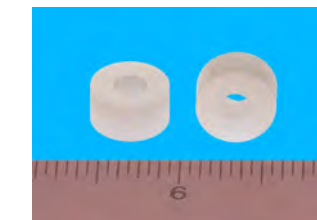
**#3612 Round Spacer**  
1/4" thick  
1" OD  
1/4" ID  
Multiple colors



**#3632 Slide Spacer**  
1-5/8" Thick,  
.245" Holes 32mm apart  
Multiple colors



**#3668 Round Spacer**  
1/4" thick  
1/2" OD  
3/16" ID.  
White



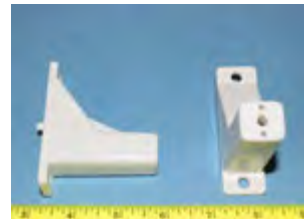
**#3680 Slide Spacer**  
1" offset 5mm peg  
Self aligning  
Easy screw start  
Multiple colors



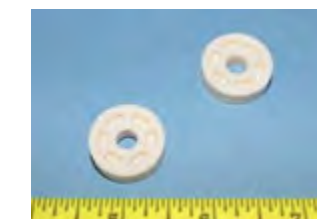
**#3614 Round Spacer**  
1/2" thick  
5/8" OD  
1/8" ID  
Multiple colors



**#3656 Slide Spacer**  
2-1/2"  
5mm peg  
64mm between holes  
Multiple colors



**#3650 Round Spacer**  
7mm" thick  
7/8" OD  
Multiple colors





**Bainbridge Manufacturing, Inc.**

Plastic Hardware Specialists | Cabinet Master® Plastic Hardware

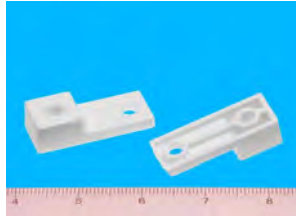
PO Box 487, 237 W. 3rd Street Waterville, WA 98858

1-509-745-9555 | info@bainbridgemfg.com

www.bainbridgemfg.com

# Drawer Slide Spacers

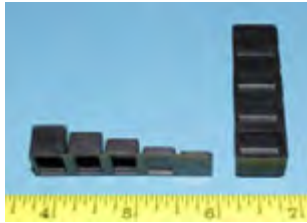
**#3667 Slide Spacer**  
1/2" thick  
1/4" diameter holes  
spaced 1-1/4" ctr. to ctr.  
Multiple colors



**#3680 Slide Spacer**  
3/4" shelf 5mm pegs  
Self aligning  
Easy screw start  
Multiple colors



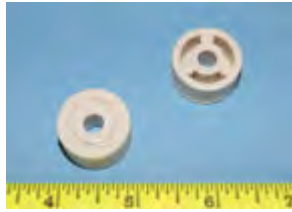
**#3619 Step Spacer**  
Black or White



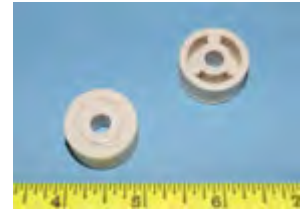


# Drawer Slide Spacers

**#3611 Round Spacer**  
1/2" thick  
1" OD  
1/4" ID  
Multiple colors



**#3610 Round Spacer**  
5/8" thick  
1" OD  
1/4" ID  
Multiple colors



**#3653 Round Spacer**  
11/16" thick  
1-3/8" OD  
1/4" ID



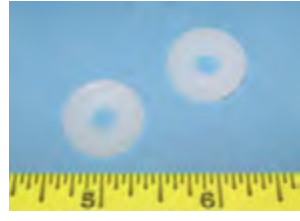
**#3646 Round Spacer**  
3/4" thick  
15/16" OD  
1/4" ID  
Multiple colors



**#3688 Round Spacer**  
7/8" thick  
1" OD  
1/4" ID  
Multiple colors



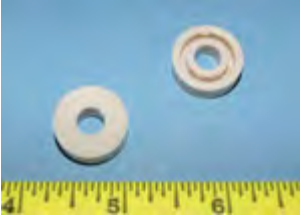
**#3642 Round Spacer**  
1/16" thick  
3/4" OD



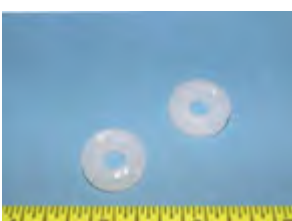
**#3671 Round Spacer**  
1/8" ID  
1" thick  
1-1/8" O.D.



**#3654 Round Spacer**  
1/4" thick  
3/4" OD  
7mm ID  
Multiple colors



**#3618 Round Spacer**  
1/8" thick  
3/4" OD  
1/4" ID



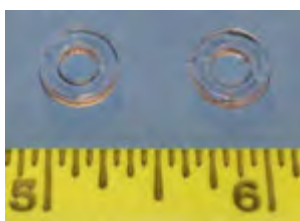
**#3625 Round Spacer**  
3/8" thick  
1" OD  
1/4" ID  
Multiple colors



**#3670 Round Spacer**  
1/8" ID  
1/2" thick  
1-1/8" O.D.

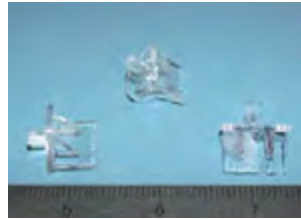


**#3672 Round Spacer**  
3/16" ID  
3/8" OD  
1/8" thick  
Clear





**#3266 Vanity**  
Low Profile  
5mm hex peg .290 long



**#32231 Kitchen**  
5mm hex peg .300 long  
5/8" Shelf



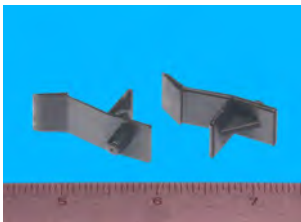
**#3270 Vanity**  
5mm peg .375 long  
3/4" Shelf  
Multiple colors



**#32231R / #32231L**  
Same as #32231  
Handed  
For short shelves



**#3250 Vanity**  
5mm hex peg .255 long  
1/2" Shelf  
Multiple colors



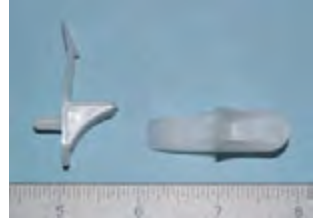
**#32201 Commercial**  
5mm hex pegs .290 long  
32mm apart  
3/4" OR 1" Shelf  
**BHMA CERTIFIED**



**#3222 Kitchen**  
Disappearing  
5mm round .230 long  
peg for 1/2" Shelf  
Multiple colors



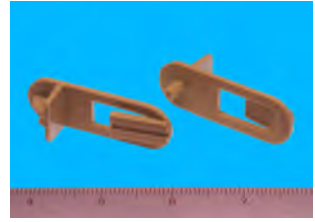
**#3269 Vanity**  
5mm peg .380 long  
5/8" Shelf  
Multiple colors



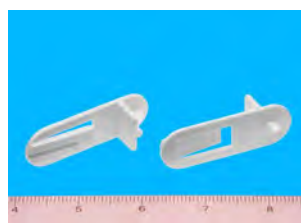
**#3204 Kitchen**  
5mm hex Peg .300 long  
for 1/2" Shelf  
Horizontal snap lock



**#3235 Kitchen**  
5mm hex peg .280 long  
for 3/4" shelf  
Multiple colors



**#3237 Kitchen**  
5mm hex peg .290 long  
for 1/2" shelf  
Multiple colors



**#3200 Kitchen**  
5mm hex peg .245 long  
for 3/4"

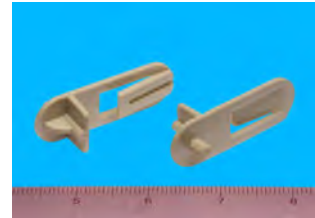




**#3218 Kitchen**  
5mm hex .280 long peg  
for 1/2" Shelf



**#3233 Kitchen**  
5mm hex peg .300 long  
for 5/8" shelf  
Multiple colors



**#3253 Kitchen**  
5mm hex peg .295 long  
for 3/4" Shelf



**#3203 Kitchen**  
5mm hex peg .300 long  
for 3/4 shelf  
Horizontal lock feature



**#3226 Kitchen**  
Disappearing  
5mm round .230 long  
peg for 3/4" Shelf  
Multiple colors



**#3267 Commercial**  
2 hex pegs .295 long  
5mm diam.  
32mm apart  
3/4" shelf



**#3227 Commercial**  
Two 5mm round .260  
long pegs 32mm apart  
for 3/4 shelf  
Multiple colors



**#3206 Commercial**  
Two 5mm .290 long  
round pegs 32mm apart  
for 3/4" or 1" Shelf  
Center screw hole



**#3248 Kitchen**  
5mm .270 long hex Peg  
for 1/2" Shelf  
Multiple colors



**#3228 Commercial**  
Two 5mm round .260  
long pegs 32mm apart  
for 1" shelf  
Multiple colors



**#3209 Kitchen**  
Mount this mullion clip  
using system screws  
Three holes for easy  
alignment



**#3224 Kitchen**  
Disappearing  
5mm round .230 long  
peg for 5/8" Shelf  
Multiple colors







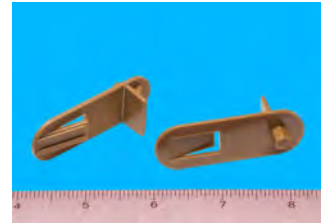
**#3202 Kitchen**

1/4" Peg  
1/2" Shelf  
Multiple colors



**#3244 Kitchen**

1/4" diameter peg  
3/4" Thick Shelf  
Peg length .290  
Multiple colors



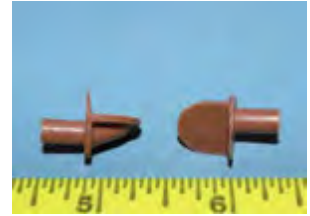
**#18152 Vanity**

5mm hex peg  
300 long peg  
Multiple colors



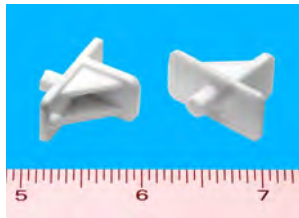
**#1815 Vanity**

5mm round peg  
350 long peg  
Multiple colors



**#3811 - 5mm peg  
#1811 - 1/4" peg  
Kitchen**

Multiple colors



**#3246 Kitchen**

1/4" Peg  
5/8" Shelf  
Multiple colors



**#3221 Garage**

Two 5mm pegs.  
325 long pegs  
32mm apart  
Multiple colors



**#3264 Furniture**

Universal 1/2" - 3/4"  
1/4" peg  
Multiple colors



**#3252 Commercial**

5mm steel peg  
1/2" shelf  
Clear



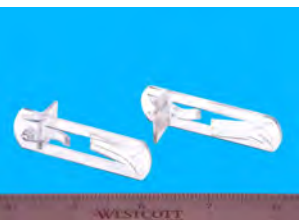
**#3258 Kitchen**

1/4" Peg  
5/8" Shelf  
Standard, Right or Left  
Multiple colors



**#3201 Kitchen**

1/4" peg  
3/4 Shelf  
Multiple colors



**#3247 Commercial**

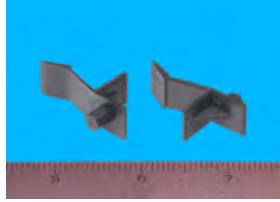
5mm steel peg  
5/8" shelf  
Clear





**#3254 Shelf Support**

1/4" Peg  
1/2" Shelf  
Multiple colors



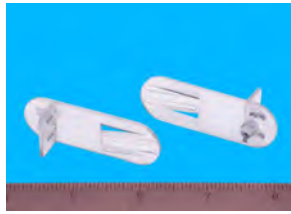
**#3232 Shelf Support**

Disappearing  
1/4" long peg  
1/2" Shelf  
Multiple colors



**#3245 Shelf Support**

1/4" peg  
3/4" Shelf  
Peg length .230  
Multiple colors



**#3234 Shelf Support**

Disappearing  
1/4" peg  
5/8" Shelf  
Multiple colors



**#3249 Shelf Support**

1/4" Peg  
1/2" Shelf  
Multiple colors



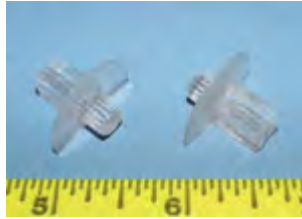
**#3236 Shelf Support**

Disappearing  
1/4" peg  
3/4" Shelf  
Multiple colors



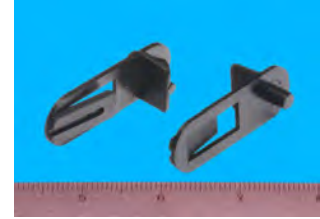
**#3243 Shelf Support**

1/4" Peg  
Clear



**#3238 Kitchen**

1/4" hex peg .300 long  
for 5/8" shelf  
Multiple colors



**#32431 Shelf Support**

5mm Peg  
Clear



**#3239 Kitchen**

1/4" hex peg .300 long  
for 3/4" shelf  
Multiple colors



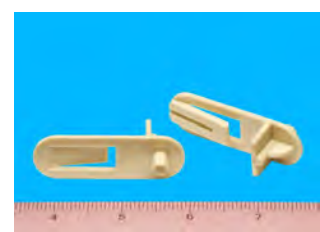
**#32691 Vanity**

5mm peg .300 long  
5/8" Shelf  
Multiple colors



**#3240 Kitchen**

1/4" hex peg .300 long  
for 1/2" shelf  
Multiple colors





## Bainbridge Manufacturing, Inc.

Plastic Hardware Specialists | Cabinet Master® Plastic Hardware

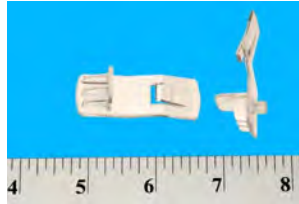
PO Box 487, 237 W. 3rd Street Waterville, WA 98858

1-509-745-9555 | info@bainbridgemfg.com

www.bainbridgemfg.com

# Shelf Supports

**#3257 Shelf Support**  
5mm" Peg  
5/8" Shelf  
Multiple colors



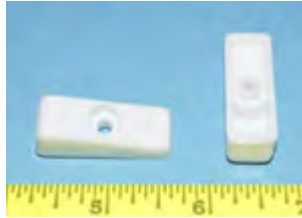
**##32581 Kitchen**  
5mm Peg  
5/8" Shelf  
Standard, Right or Left  
Multiple colors





# Drawer Bumpers

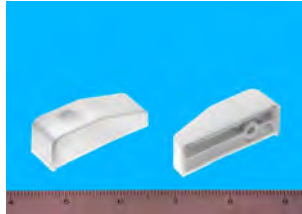
**#4602 Drawer Bumper**  
1/2" thick  
reference tab  
Multiple colors



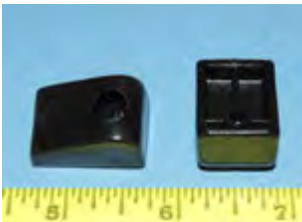
**#4600 Drawer Bumper**  
3/8" thick  
reference tab  
Multiple colors



**#4605 Drawer Bumper**  
3/4" thick  
reference tab  
Multiple colors



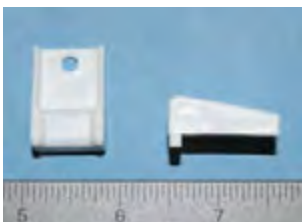
**#4604 Drawer Bumper**  
1/2" thick  
reference tab  
Multiple colors



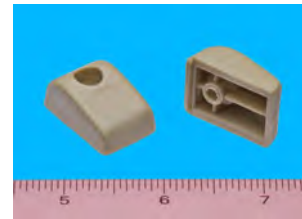
**#4603 Drawer Bumper**  
1/2" thick  
no reference tab  
Multiple colors



**#4606 Drawer Bumper**  
1/2" thick  
Reference tab



**#4601 Drawer Bumper**  
7/16" thick  
reference tab  
Multiple colors





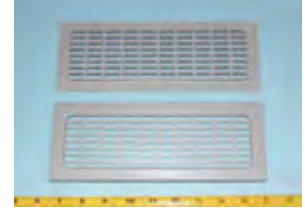
**#4501 Vent Grill**

Fits 2" hole  
5/8 deep walls  
Multiple colors



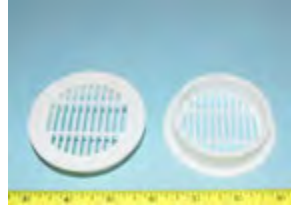
**#4505 Vent Grill**

2-5/8" X 8-21/32"  
1/4 deep walls  
Multiple colors



**#4500 Vent Grill**

Fits 2-1/2" hole  
5/8 deep walls  
Multiple colors



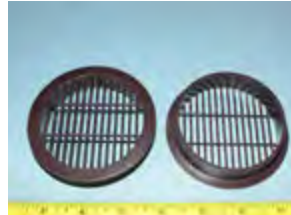
**#4506 Vent Grill**

2-1/2" X 10"  
1/4" deep walls  
Multiple colors



**#4502 Vent Grill**

Fits 3" hole  
5/8 deep walls  
Multiple colors



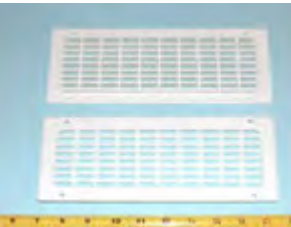
**#4503 Vent Grill**

2-3/8" X 8-5/8"  
3/8 Deep walls  
Multiple colors



**#4504 Vent Grill**

2-5/8" X 8-21/32"  
1/4 deep walls  
Has screw holes  
Multiple colors



**#4508 Vent Grill**

2" X 4" rectangle hole  
3/4" deep walls  
Multiple colors



**#4509 Vent Grill**

2-7/16" X 8-3/8"  
3/8 deep walls  
Multiple colors



**#4507 Vent Grill**

4" Round hole  
3/4" deep walls  
Multiple colors





**#6004 Epoxy**  
Right and Left  
10mm pegs on center  
High strength ABS  
Ultra grip pegs



**#6206 Undermount**  
8mm ultra grip pegs  
1/2" R—L movement



**#6002 Epoxy Socket**  
3mm frame  
10mm handed pegs  
Right and Left  
High strength ABS  
Ultra grip pegs



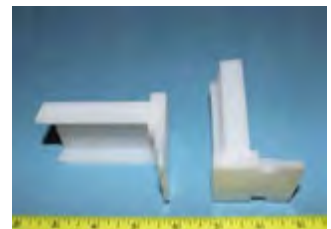
**#6208 Undermount**  
No pegs screw on  
1/2" R—L movement



**#6003 Epoxy Socket**  
3mm frame  
8mm handed pegs  
Right and Left  
High strength ABS



**#6743 Full Extension**  
No pegs.  
Screw on  
2-9/16" deep



**#6005 Epoxy**  
Right and Left  
8mm pegs on center  
High strength ABS  
Ultra grip pegs



**#674 Full Extension**  
8mm pegs.  
Right and Left  
2-9/16" deep  
Peg length 3/8"



**#6018 Undermount**  
8mm standard pegs  
1/2" R—L movement



**#6781 Euro**  
8mm pegs  
Adjustable  
3" deep  
Right and Left



**#6203 Under Mount**  
3/4" R—L adjustment  
Stop 1-1/4 from back  
3-3/4 long  
8mm standard pegs



**#678 Euro**  
10mm pegs  
Adjustable  
3" deep  
Right and Left





**#6012 Epoxy Socket**  
3mm frame  
no pegs  
Right and Left  
High strength ABS



**#6202 Under Mount**  
No pegs  
Non handed  
Screw in place



**#6019 Undermount**  
8mm standard pegs  
1/2" R—L movement



**#683 Under Mount**  
Adjustable socket  
3 inches long  
8mm locking pegs



**#6204 Under Mount**  
3/4" R—L adjustment  
Stop 1-7/8 from back  
3-3/4 long  
8mm standard pegs



**#621SC Epoxy**  
Self Closing  
1" x 7/16"  
2-3/8" deep  
Right and Left



**#6207 Undermount**  
8mm standard pegs  
1/2" R—L movement



**#6208 Undermount**  
no pegs , screw on  
1/2" R—L movement



**#6209 Under Mount**  
3/4" R—L adjustment  
3-3/4 long  
8mm pegs



**#6017 Bent Tail**  
Natural ABS  
1/4" peg



**#6211 Undermount**  
8mm standard pegs  
1/2" R—L movement



**#6791 Undermount**  
Adjustable socket  
3 inches long  
8mm locking pegs  
Tight Friction R—L





**#6402 Euro**  
2- 3/8" long  
Right and Left



**#648 Euro**  
2 -1/8" deep  
Right and Left



**#675 Euro**  
Adjustable  
3" deep  
Right and Left



**#647 Euro**  
Adjustable  
2-1/8" deep  
Right and Left



**#6016 Undermount**  
8mm ULTRA GRIP pegs.  
3-3/4" long  
Center pegs



**#622 Epoxy**  
Adjustable  
1" x 7/16"  
2-3/8" deep  
Right and Left



**#6101 Full Extension**  
Adjustable  
Staple or screw in place  
1/2" R to L movement  
4" long



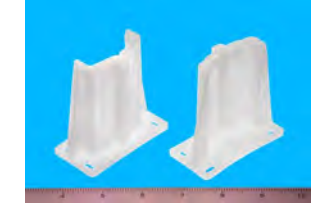
**#647SC Euro**  
Adjustable  
Self Closing  
1" x 7/16"  
2-1/8" deep  
Right and Left



**#6742 Full Extension**  
8mm pegs  
Right and Left  
2-9/16" deep  
Peg length 5/8"



**#615 Full Extension**  
2-9/16" deep



**#679 Undermount**  
Adjustable socket  
3 inches long  
8mm locking pegs  
Smooth Friction



**#6752SC Euro**  
Adjustable  
Self Closing  
3" deep 8mm pegs  
Right and Left







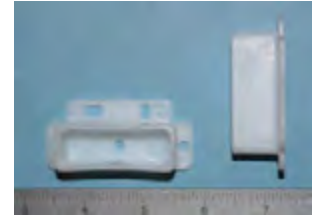
**#675SC Euro**

Adjustable  
Self Closing  
3" deep  
Right and Left



**#609 Socket**

Replacement for older  
kitchens



**#6472SC Euro**

8mm pegs  
Self Closing adjustable  
Right and Left



**#613 Socket**

Replacement for older  
kitchens



**#622SC Epoxy**

Adjustable  
Self Closing  
2-3/8" deep  
Right and Left



**#627 Full Extension**

1-9/16" deep



**#659 Euro**

Adjustable  
2-7/8" deep  
Right and Left



**#644 Full Extension**

1-9/16" deep



**#675 SC Euro**

Adjustable  
Self Closing  
3" deep  
Right and Left



**#664 Socket**

3/4 X 3/4 X 1" deep  
Replacement for older  
kitchens



**#606 Socket**

Replacement for older  
kitchens



**#6222SC Epoxy**

Adjustable 8mm pegs  
Self Closing  
2-3/8" deep  
Right and Left





**#660SC Euro**

Self Closing  
3" Long  
Right and Left



**#665 Epoxy**

Right and Left  
Screw or staple  
5/16" x 7/8" x 2-1/16"



**#662SC Euro**

Self Closing  
3" deep  
Right and Left



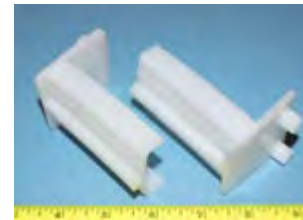
**#648SC Euro**

Self Closing  
2 -1/8" deep  
Right and Left



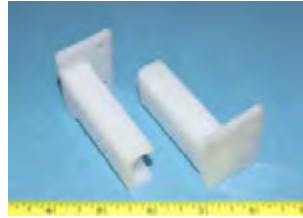
**#687 Full Extension**

Fixed 10mm pegs  
2-7/8" deep  
Right and Left



**#621 Epoxy**

2-3/8" deep  
1" x 7/16"  
Right and Left



**#6800 Hanging socket**

1-5/8" x 1/2" x 3/4"



**#6802 Hanging Socket**

1-5/8" x 1/2" x 1-1/2"



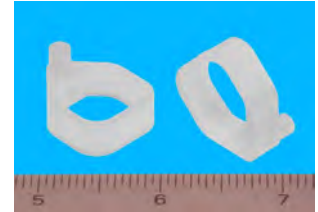


# Shelf Hold Down Clips

**#3405**  
**Shelf Hold Down**  
5mm peg w/lead in  
1/8" wide



**#3407**  
**Shelf Hold Down**  
5mm peg  
5/16" Wide for short  
shelf



**#3411**  
**Shelf Hold Down**  
5mm peg  
STAR ENDS



**#3408**  
**Shelf Hold Down**  
5mm peg  
ROUND ENDS



**#3409**  
**Shelf Hold Down**  
3mm peg  
STAR ENDS



**#3406**  
**Shelf Hold Down**  
3mm peg  
ROUND ENDS



**#3400 RIGID**  
**Shelf Hold Down**  
5mm peg  
1/4" wide



**#3403**  
**Shelf Hold Down**  
5mm peg 7/32 long  
5/16 wide



**#3402**  
**Shelf Hold Down**  
5mm peg 15/64 long  
5/16 wide



**#3401 Shelf Retainer**  
Shipping clip for 5mm  
peg shelf supports to  
keep shelf from sliding  
forward



**#3410**  
**Shelf Hold Down**  
5mm peg  
1/8" wide





# Hinge , Catch & Lock Spacers

**#3519 Spacer**  
Hafele LOOX LED IR  
Switch spacer  
1/8" thick  
Multiple colors



**#3509 Hinge Plate Spacer**  
3mm thick - stackable  
Multiple colors



**#3520 Hinge Spacer**  
1/4" Thick



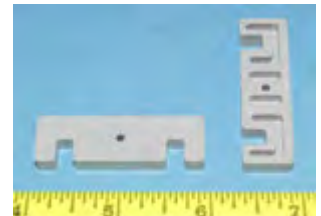
**#3502 Hinge Plate Spacer** 5mm thick



**#3510 Hinge Plate Spacer**  
1/16" thick - snaps in half for smaller hinges



**#3512 Hinge Plate Spacer** 1/4" thick



**#3506 Hinge Plate Spacer**  
1/8" thick  
Large holes for 7.8mm euro screw



**#3505 Hinge Plate Spacer**  
screw holes at .188"  
1/4" thick



**#3511 Magnetic Catch Spacer**  
3/16" thick  
Fits Hafele 246.15



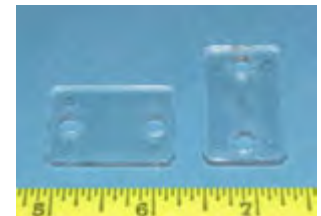
**#3501 Hinge Plate Spacer**  
7.6 mm Thick



**#3503 Catch Spacer**  
1/2" thick  
2 holes 32mm apart



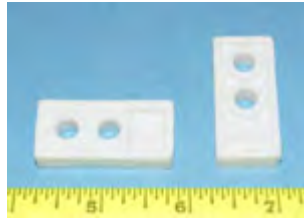
**#3516 Catch Spacer**  
1/8" thick  
3/4" X 1-1/4"



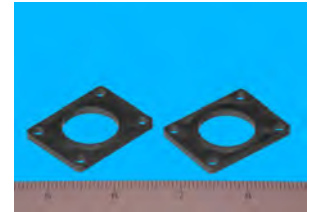


# Hinge, Catch & Lock Spacers

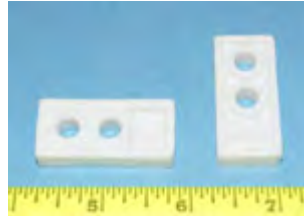
**#3518 Catch Spacer**  
3/16" thick.



**#3517 Lock Spacer**  
1/8" thick with 4 screw holes  
Black



**#3514 Catch Spacer**  
5/16" thick.



**#3521 Lock Spacer**  
1-11/16 X 1-11/16  
3/8" thick  
3/4 X 7/8 oblong hole  
White



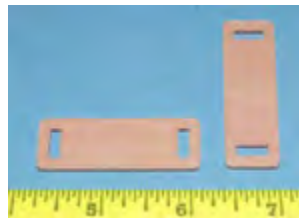
**#3508 Hinge Plate Spacer**  
Small holes for 7mm euro screw  
3/8" thick



**#3513 Catch Spacer**  
1/4" thick with small holes for wood screws



**#3515 Catch Spacer**  
1/8" thick  
3/8" X 1-1/2"



**#3507 = 1/4"**  
**#3504 = 3/8"**  
**Hinge Plate Spacer**  
screw holes at .245"





## Bainbridge Manufacturing, Inc.

Plastic Hardware Specialists | Cabinet Master® Plastic Hardware

PO Box 487, 237 W. 3rd Street Waterville, WA 98858

1-509-745-9555 | info@bainbridgemfg.com

www.bainbridgemfg.com

# Screen and Door Panel Clips

**#1806**

**Straight Clip**

1/8" thick

Attach with screw

Clear and colors



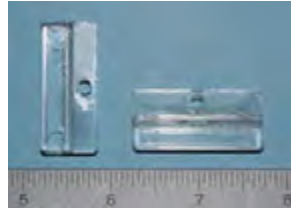
**#1807**

**Straight Clip**

3/16" thick

Attach with screw

Clear and colors



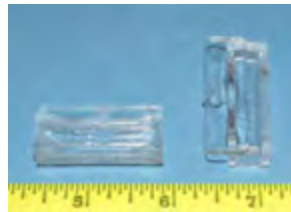
**#1809**

**Straight Clip**

3/8" thick

Attach with screw

Clear and colors



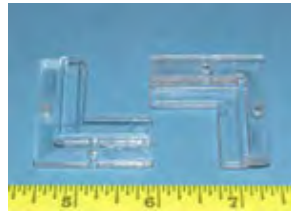
**#1804**

**Corner Clip**

1/8" thick

Attach with screw

Clear and colors



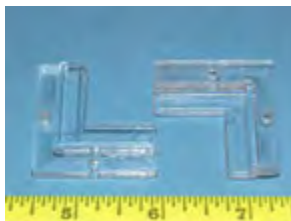
**#1805**

**Corner Clip**

3/16" thick

Attach with screw

Clear and colors

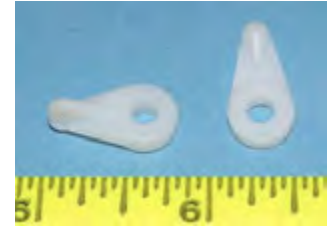




**#1803**  
Screen Clip  
Flush



**#1858**  
Screen Clip  
1/16"



**#1813**  
Screen Clip  
1/8



**#1853**  
Screen Clip  
3/16"



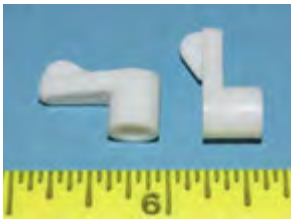
**#1823**  
Screen Clip  
3/16"



**#1862**  
Screen Clip  
Flush



**#1854**  
Screen Clip  
1/4"



**#1852**  
Screen Clip  
1/16"



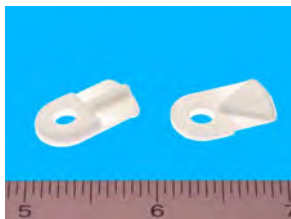
**#1855**  
Screen Clip  
5/16"



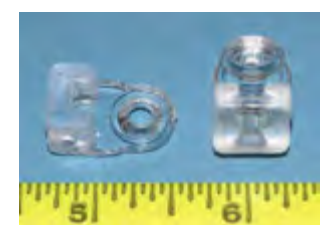
**#1857**  
Screen Clip  
1/8"



**#1820**  
Screen Clip  
Flush



**#1810**  
Screen Clip  
1/4"



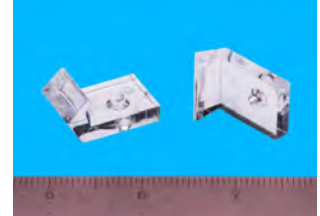


# Screen and Mirror Clips

**#1863**  
**Screen Clip**  
1-3/16"



**#1866**  
**Mirror Clip**  
Side Mount



**#1850**  
**Screen Clip**  
1-1/8"



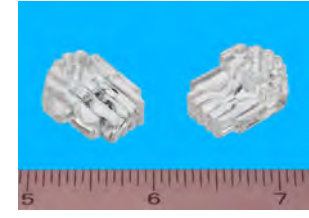
**#1859**  
**Mirror Clip**  
1/4"



**#1856**  
**Screen Clip**  
3/8"



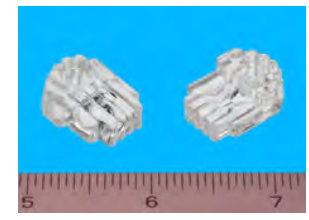
**#1861**  
**Mirror Clip**  
1/8"



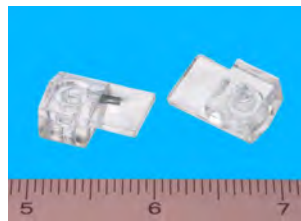
**#1851**  
**Screen Clip**  
7/16"



**#1860**  
**Mirror Clip**  
3/16"



**#1865**  
**Mirror Clip**  
1/8"



**#1864**  
**Mirror Clip**  
1/4"







# Bainbridge Manufacturing, Inc.

Plastic Hardware Specialists | Cabinet Master® Plastic Hardware

PO Box 487, 237 W. 3rd Street Waterville, WA 98858

1-509-745-9555 | info@bainbridgemfg.com

www.bainbridgemfg.com

# Door Clips

## #3300 Door Clip

Small Doors  
5/8 X 3/4



## #3301 Door Clip

Large Doors  
3/4" X 3/4"



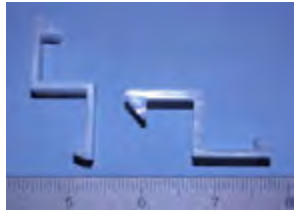
## #3302 Door Clip

3/4 X 3/4 X 1-23/64



## #3303 Door Clip

3/4 X 21/32 X 21/32





**Bainbridge Manufacturing, Inc.**

Plastic Hardware Specialists | Cabinet Master® Plastic Hardware

PO Box 487, 237 W. 3rd Street Waterville, WA 98858

1-509-745-9555 | info@bainbridgemfg.com

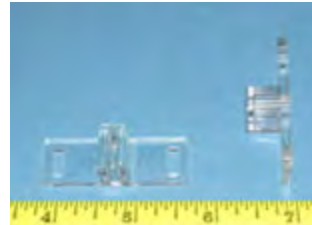
www.bainbridgemfg.com

# Drawer & Door Stops

**#1902**  
**Drawer Stop**  
2" long



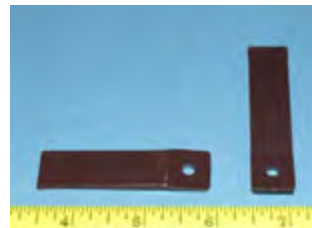
**#1915**  
**Door Stop**  
Uses 2 screws



**#1994**  
**Drawer Stop**  
2-1/2" long with extra  
rib for strength



**#1992**  
**Drawer Stop**  
2-1/2" long



**#1960 Drawer Latch**  
Designed for RV,  
Camper marine drawer  
Lift drawer to open





# Bainbridge Manufacturing, Inc.

Plastic Hardware Specialists | *Cabinet Master® Plastic Hardware*

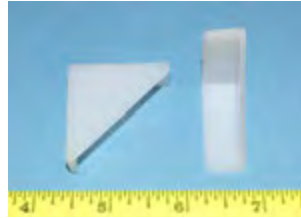
PO Box 487, 237 W. 3rd Street Waterville, WA 98858

1-509-745-9555 | info@bainbridgemfg.com

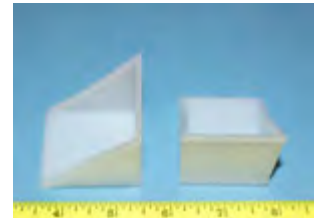
www.bainbridgemfg.com

# Corner Protectors

**#5405**  
**Corner Protector**  
1-1/4" X 1-1/4"



**#1500**  
**Corner Protector**  
Fits 1-1/2" thick board



**#15011**  
**Corner Protector**  
3" X 3"

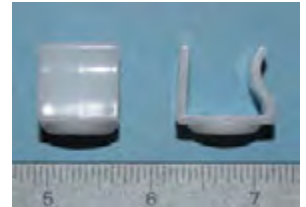




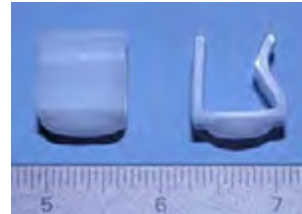
**#5402 Slide Glide**  
snap on to a 1/2"  
cabinet sidewall to slide  
cabinet in shop



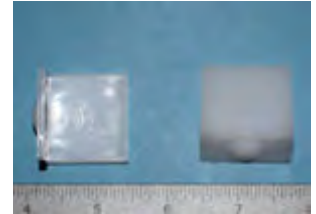
**#5403 Slide Glide**  
snap on to a 5/8"  
cabinet sidewall to slide  
cabinet in shop



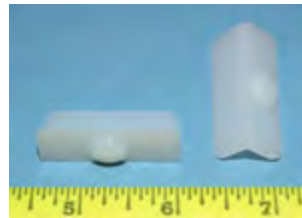
**#54021 Slide Glide**  
snap on to a 12mm  
cabinet sidewall to slide  
cabinet in shop



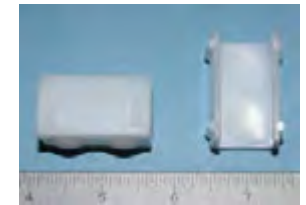
**#5404 Slide Glide**  
Staple in place



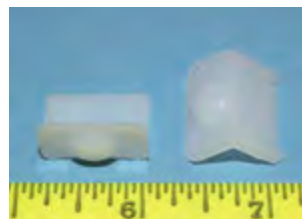
**#1928 Slide Glide**  
1-1/2" X 9/16"  
1/8" thick bump  
staple in place.



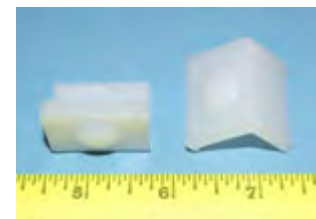
**#1988 Slide Glide**  
snap on to 3/4" thick  
material and staple in  
place



**#1947 Slide Glide**  
7/8" X 1/2" X 1/2"  
staple in place for small  
applications



**#1983 Slide Glide**  
1-1/8" X 3/4" X 7/8"  
staple in place.



**#1985 Slide Glide**  
1-1/2" long X 9/16"  
1/8" thick bump  
safety tab for holding



**#1914 Slide Glide**  
Has slide bump for  
bottom attachment  
1-1/4" X 1-1/4"



**#5401 Slide Glide**  
Snap on to 3/8 thick  
material and staple in  
place



**#19882 Slide Glide**  
snap on to 1" thick  
material and staple in  
place

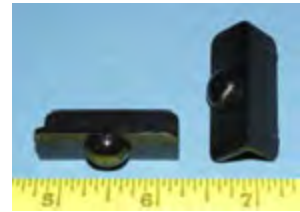




**#1903 Slide Glide**  
1-5/8" long X 3/4" wide  
X 3/16" thick — staple  
in place.



**#19281 Slide Glide**  
1-1/2" X 9/16"  
3/16" bump on bottom



**#1989 Slide Glide**  
1/2"



**#5406 Slide Glide**  
2-1/2" X 3/4"



**#19881 Slide Glide**  
2-5/8" X 1/2"



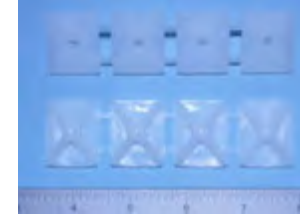
**#1906 Slide Glide**  
1-3/4" long 3/4" wide  
with 5/16" thick bump  
staple in place.



**#19886 Slide Glide**  
2-1/2" X 3/4"



**#5407 Slide Glide**  
1" X 1-1/8"  
Strip of 4—break off  
after stapling in place



**#19887 Slide Glide**  
2-5/8" X 1/2"

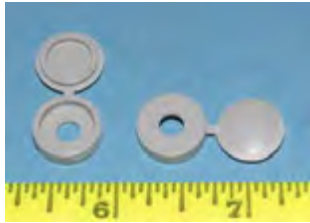


**#1946 Slide Glide**  
2" long X 3/4" wide X  
1/2" wide , staple in  
place on corner.

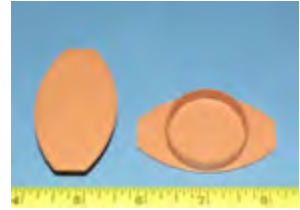




**#1930 Screw Cover**  
Fold over lid to hide screw.  
Multiple colors



**#1932 Hinge Cover**  
Covers 35mm extra hinge holes  
Multiple colors



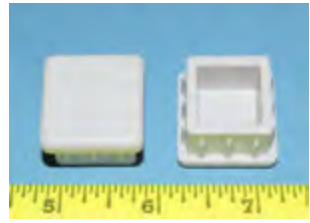
**#3022 Tube Cap**  
Rectangular tube 1" X 2"  
12-14 gage steel  
Multiple colors



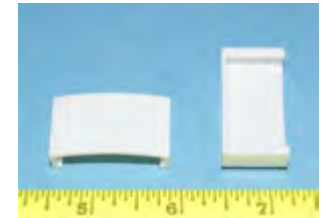
**#1922 Hinge Cover**  
Covers 35mm extra hinge holes  
Multiple colors



**#3017 Tube Cap**  
1" X 1"  
12-14 gage steel  
Multiple Colors



**#3021 Extrusion Cap**  
For wall hanging displays  
Multiple Colors



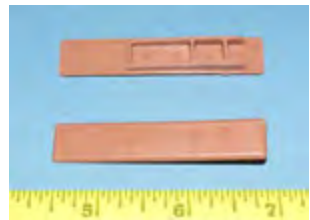
**#1924 Castle Cap**  
Textured finish  
Multiple colors



**#1907 Tube Cap**  
Fits 3/4" tube  
Multiple colors



**#1923 Castle Cap**  
Smooth finish  
Multiple colors



**#3018 End Cap**  
1/4" X 3/4"  
Multiple colors



**#3023 Dual Plug**  
2 8mm at 32mm part  
Multiple colors

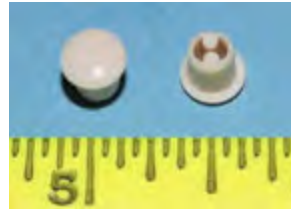




**#30151 Hole Plug**  
10mm  
Multiple colors



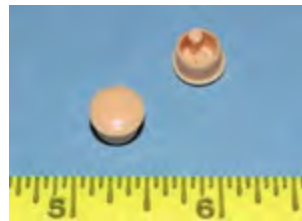
**#3001 Hole Plug**  
5mm  
Multiple colors



**#3005 Hole Plug**  
1/4"  
Multiple colors



**#3010 Hole Plug**  
8mm  
Multiple colors



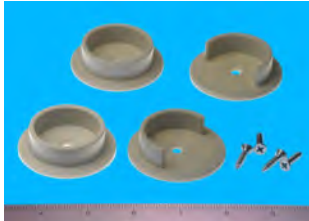
**#3024 Finishing Plug**  
Hole Plug 5/8"  
Multiple colors





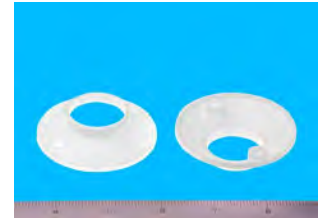
**#1323 Pole Socket**

Fits 1-3/8" rod



**#1327 Pole Socket**

Fits 1-1/6" steel rod in mobile homes



**#1324 Pole Socket**

Fits 1-3/8" rod and has 2 5mm pegs on back



**#1320 Pole Socket**

Fits 1-5/16" rod and has 2 5mm pegs on back



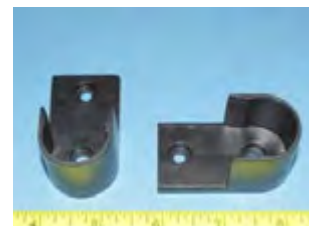
**#1322 Pole Socket**

Fits 3/4" rod and hangs from top of cabinet or closet using a #8 wood-screw



**#1329 Pole Socket**

Fits 1" rod and has 2 screw holes for #5 pan head screw



**#1330 Pole Socket**

Fits 17mm rod and has 5mm peg on back

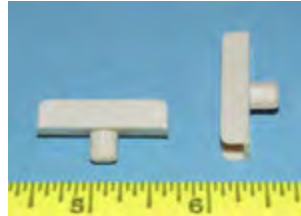






# Vertical Divider Clips

**#4205 Divider Clip**  
5mm diameter peg  
Holds 1/4" thick board  
Multiple colors



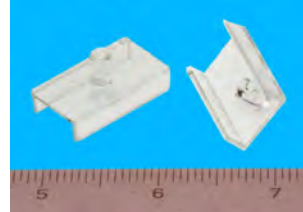
**#4212 Divider Clip**  
3/4" long  
1/8" saw slot  
1/4" panel  
Multiple colors



**#4206 Divider Clip**  
1/8" saw slot tab,  
Holds 1/4" thick board  
Multiple colors



**#4200 Divider Clip**  
1/4" diam .295 long peg  
Holds 1/2" thick board  
Multiple colors



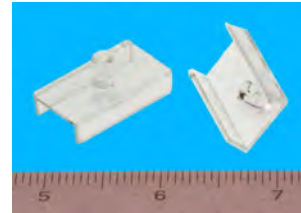
**#4201 File Holder**  
2 holes 32mm apart.  
Multiple colors



**#4204 Divider Clip**  
1/4" diameter peg  
Holds 1/4" thick board  
Multiple colors



**#4203 Divider Clip**  
5mm diameter peg  
Holds 1/2" thick board  
Multiple colors



**#4211 Divider Clip**  
1/2" drawer side  
1/4" thick board  
2" long



**#4202 File Holder**  
2 5mm diameter pegs  
32mm apart  
Multiple colors



**#4210 Divider Clip**  
1/2" drawer side  
1/4" thick board  
3-1/2" long



**#4209 Divider Clip**  
1/8" saw slot  
3/8" thick board



**#4208 Divider Clip**  
1/4" diameter peg  
Holds 3/4" thick board  
Multiple colors





## Bainbridge Manufacturing, Inc.

Plastic Hardware Specialists | Cabinet Master® Plastic Hardware

PO Box 487, 237 W. 3rd Street Waterville, WA 98858

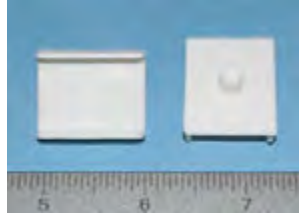
1-509-745-9555 | info@bainbridgemfg.com

www.bainbridgemfg.com

# Vertical Divider Clips

### #4207 Divider Clip

5mm diameter peg  
Holds 3/4" thick board  
Multiple colors



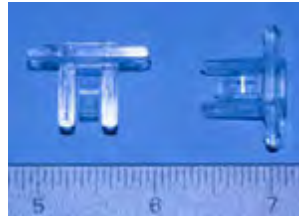
### #4213 Divider Clip

7mm panel 2-3/8" long  
(1/8" saw slot tab)  
Multiple colors



### #4214 Divider Clip

7mm panel 3/4" long  
(1/8" saw slot tab)  
Multiple colors



### #4215 Divider Clip

1/4" diam .295 long peg  
Holds 1/2" thick board  
Multiple colors





# Backplates and Guides

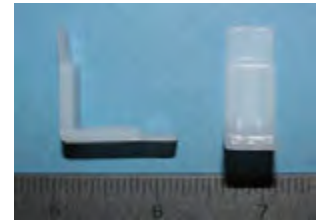
**#508 Backplate**

1-3/16" x 5/16"  
(for wood)  
NO reference tabs



**#218 Drawer Glide**

5/8" X 5/8" X 1/2" X  
1/8" Thick With 5/16"  
Staple Tabs



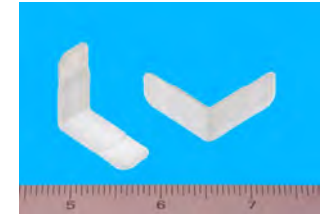
**#514 Drawer Guide**

Backplate 1-1/8" x 1/4"



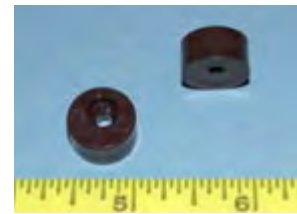
**#200 Drawer Glide**

5/8" X 5/8" long  
1/2" Wide  
.080" Thick



**#1957 Eccentric Guide**

1/4" tall X 9/16" OD  
Attach with screw  
Multiple colors



**#201 Drawer Glide**

3/8" x 5/8" long  
1/2" Wide  
.080" Thick



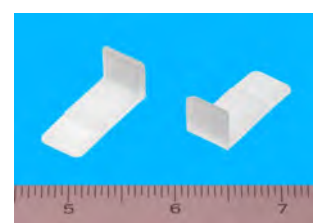
**#1909 Eccentric Guide**

9/16" tall X 9/16" OD  
Attach with screw  
Multiple colors



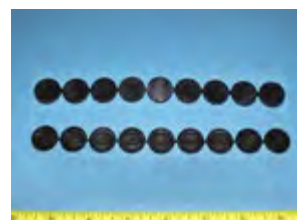
**#206 Drawer Glide**

3/8" X 5/8" X .080"  
1/2" wide  
5/16" staple tab



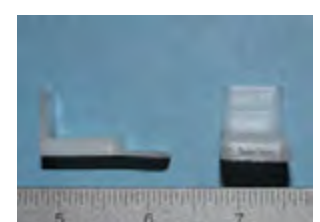
**#298 Drawer Glide**

Staple on twist off  
3/4" OD X 3/16" thick



**#209 Drawer Glide**

5/8" X 3/4" X .080"



**#502 Backplate**

(for wood)  
3/4" X 5/16"  
reference tabs



**#509 Backplate**

1-3/16" x 5/16"  
(for wood) reference  
tabs

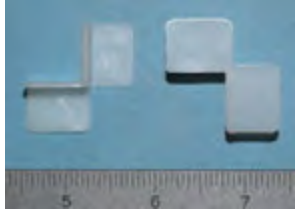




# Backplates and Glides

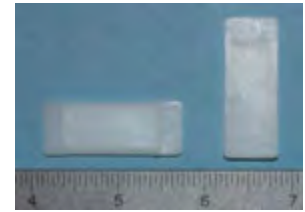
## #205 Drawer Glide

Reversible  
5/16" x 1/2"  
.080" Thick



## #230 Drawer Glide

1/8" X 1-5/8"  
Staple tabs on each end



## #295 Drawer Glide

Staple on twist off  
5/8" OD  
3/16" thick



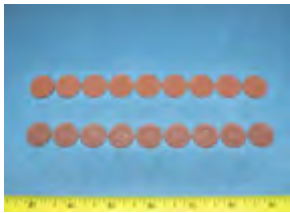
## #520 Backplate

1-5/16" x 5/32"  
(for metal)



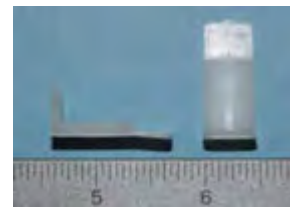
## #299 Drawer Glide

Staple on twist off  
11/16" OD  
1/8" thick



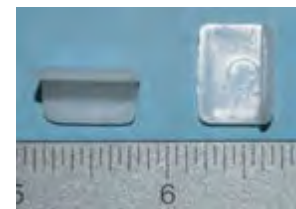
## #208 Drawer Glide

5/32" thick with staple  
tab



## #225 Drawer Glide

.080" thick with staple  
tab





**#1710 Drawer Pull**  
Inset and has holes for  
two #6 wood screws  
Multiple colors



**#1724 Velociraptor**  
HUGE 8" Long Rubber  
Drawer Pull  
Peg 3" apart  
Multiple colors



**#1722 Drawer Pull**  
96mm hole spacing  
No threads  
Use #8 sheet metal  
screw  
Multiple colors



**#1725 Stegosaurus**  
HUGE 11-1/2" Long  
Rubber Drawer Pull  
Pegs 3" apart  
Multiple colors



**#1718 Triceratops**  
HUGE 7" Long Rubber  
Drawer Pull  
Pegs 3" apart  
Multiple colors



**#1727 Pleisosaur**  
HUGE 11" Long Rubber  
Drawer Pull  
Pegs 3" apart  
Multiple colors



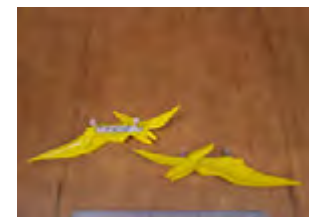
**#1719 Long Neck**  
HUGE 11" Long  
Rubber Drawer Pull  
Pegs 3" apart  
Multiple colors



**#1723 Tyrannosaurus**  
HUGE 7-1/2" Long  
Rubber Drawer Pull  
Pegs 3" apart  
Multiple colors



**#1726 Pterodactyl**  
HUGE 11-1/2" Long  
Rubber Drawer Pull  
Pegs 3" apart  
Multiple colors





**#1979 Dowel pin**

8mm diameter  
ABS  
1-1/2" long



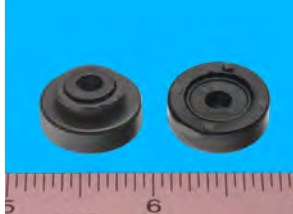
**#1996 Dowel Pin**

**SUPER GRIP**  
8mm diameter  
Nylon  
1-1/2" long



**#740 Utility Roller**

Attach with screw  
Has axle to move freely  
Black and Brown



**#37001 Adapter**

1/2" build up adapter  
for Bainbridge  
Undermount spacers  
Multiple colors



**#1958 Drapery Hanger**

Attach with screws for  
hanging drapery rods



**#37000 Adapter**

1/8" build up adapter  
for Bainbridge spacers.



**#1952 Wire**

**Management Hook**

Attach with screws for  
hanging wires  
Multiple colors



**AWFS<sup>®</sup>**



ASSOCIATION OF  
WOODWORKING  
& FURNISHINGS  
SUPPLIERS



KITCHEN CABINET  
MANUFACTURERS ASSOCIATION\*



**BHMA**  
builders hardware manufacturers  
association